



HUB2KIT1MP(WHITE) - WHITE

Kit contains -

1 x HUB2

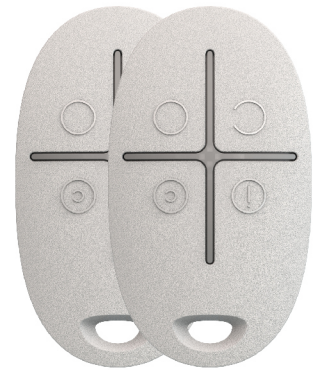
See page 2 for spec

2 x MOTIONPROTECT

See page 3 for spec

2 x SPACECONTROL

See page 4 for spec



1 x DOORPROTECT

See page 5 for spec

1 x STREETSIREN

See page 6 for spec

1 x HOMESIREN

See page 7 for spec



Hub 2 Specification

Complete set	The radio channel central unit with the support of visual alarm verification detectors
Installation	Indoors
Connected devices	100
Video surveillance support	Up to 25 cameras or DVRs
Users	50
Rooms	50
Security groups	9
MotionCam detector support	+
Communication channels	Ethernet Two 2G SIM-cards
Alarm signals	Delivery time: 0.15 sec Notification types: SMS, call, push-notification
Switching between the SIM-cards	4 minutes
CMS connectivity	Contact ID, SIA
The speed of alarm delivery to CMS	Instant
Software	OS Malevich
Power supply	Main supply: 110-240 V Battery backup: Li-Ion 2 A.h Up to 16 hours of offline operation when the Ethernet is switched off
Jeweller radio technology	Communication range with detectors - up to 2,000 in an open space Two-way communication between devices Operating frequencies - 868,0-868,6 Mhz Self-adjusting RF output power - up to 25 mW Black encryption based on AES algorithm Detector polling period - 12-300s Frequency hopping
Wings radio technology	Transmission of visual confirmations Delivery verification of packages
Operating temp range	From -10°C to +40°C
Size	163 x 163 x 36mm
Weight	362g
Complete set	Ajax Hub 2 intelligent control panel SmartBracket mounting panel Power cable, Ethernet cable, Installation kit, users guide
Connected ReX	5
Scenarios	32

MotionProtect Specification

Classification	Electro-optical combined radio channel security detector
Type of detector	Wireless
Installation method	Indoors
Compatibility	Operates with Hub, Hub Plus, ReX, ocBridge Plus, uartBridge
Sensing element	PIR sensor
Alarm signal delivery time	0.15 s
Motion detection distance	Up to 12 m
Detection angles	Horizontal — 88.5°, Vertical — 80°
Sensitivity	Adjustable, 3 levels
Recommended installation height	2.4 m
Pet immunity	Weight — up to 20 kg, Height — up to 50 cm
Power supply	Battery: CR123A battery, Power supply voltage: 3 V Battery life — up to 7 years
Jeweller radio technology	Communication range with central unit — up to 1,700 m in an open space Two-way communication between devices Operating frequencies — 868.0—868.6 MHz Self-adjusting RF output power — up to 20 mW Block encryption based on AES algorithm Device polling period — 12-300 s
Temperature sensor	Available
Operating temp range	From +5°C to +40°C
Permissible humidity	Up to 75%
Anti-sabotage	Protection against fraud Jamming detection Tamper-resistant
Remote setting and testing	+
Dimensions	110x65x50 mm
Weight	86 g
Certification	Grade 2, CE
Complete set	MotionProtect motion detector SmartBracket mounting panel CR123A battery (pre-installed) Installation set User's guide

Space Control Specification

Classification	Four button key fob with feedback
Compatibility	Operates with Hub, Hub Plus, ReX, ocBridge Plus, uartBridge
Number of buttons	4
Deactivation of the panic button	Available
Power supply	Battery: CR2032A battery, Power supply voltage: 3 V Battery life — up to 3 years
Jeweller radio technology	Communication range with central unit — up to 1,300 m in an open space Two-way communication between devices Operating frequencies — 868.0—868.6 MHz Self-adjusting RF output power — up to 20 mW Block encryption based on AES algorithm Device polling period — 12-300 s
Operating temp range	From -25°C to +50°C
Permissible humidity	Up to 95%
Dimensions	65x37x10 mm
Weight	13g
Certification	Grade 2, CE
Complete set	SpaceControl keyfob CR2032 battery (pre-installed) User's guide

Door Protect Specification

Classification	Point magnetic and contact radio channel security detector
Type of detector	Wireless
Installation method	Indoors
Compatibility	Operates with Hub, Hub Plus, ReX, ocBridge Plus, uartBridge
Sensing element	Reed switch
Alarm signal delivery time	0.15 s
Activation threshold	Small magnet — 1 cm, Big magnet — 2 cm
Power supply	Battery: CR123A battery, Power supply voltage: 3 V Battery life — up to 7 years
Jeweller radio technology	Communication range with central unit — up to 1,200 m in an open space Two-way communication between devices Operating frequencies — 868.0—868.6 MHz Self-adjusting RF output power — up to 20 mW Block encryption based on AES algorithm Device polling period — 12-300 s
Temperature sensor	Available
Operating temp range	From +5°C to +40°C
Permissible humidity	Up to 75%
Anti-sabotage	Protection against fraud Jamming detection Tamper-resistant
Remote setting and testing	+
Dimensions	Diameter: 20 mm Height: 90 mm
Weight	29g
Certification	Grade 2, CE
Complete set	DoorProtect opening detector SmartBracket mounting panel Two magnets CR123A battery (pre-installed) External contact Installation set User's guide

Street Siren Specification

Classification	Light and sound radio channel security sounder
Type of siren	Wireless
Installation method	Indoors /Outdoors
Compatibility	Operates only with Hub, Hub Plus and ReX
Type of notification	Sound/light
Sound volume level	Adjustable, 81-113 dB at a distance of 1 m
Alarm length	Adjustable, 3-180 s
Indication of armed/ disarmed status	Yes
Alarm signal delivery time	0,15 s
Power supply	Battery: Four CR123A batteries Power supply voltage: 3 V Battery life — up to 5 years Mains supply: DC 12 V \pm 20%
Jeweller radio technology	Communication range with central unit — up to 1,500 m in an open space Two-way communication between devices Operating frequencies — 868.0-868.6 MHz Self-adjusting RF output power — up to 25 mW Block encryption based on AES algorithm Device polling period — 12-300 s
Temperature sensor	Available
Operating temp range	From -25°C to +50°C
Permissible humidity	Up to 95%
Protection class of body	IP54
Anti-sabotage	Protection against fraud Jamming detection Tamper-resistant
Remote setting and testing	+
Dimensions	200x200x51mm
Weight	528 g
Certification	Grade 2, CE
Complete set	StreetSiren siren SmartBracket mounting panel 4 batteries CR123A (pre-installed) Installation set User's guide

Home Siren Specification

Classification	Radio channel security sounder
Type of siren	Wireless
Installation method	Indoors
Type of notification	Sound
Connector for external LED	Available
Sound volume level	Adjustable, 81-105 dB at a distance of 1 m
Alarm length	Adjustable, 3-180 s
Indication of armed/ disarmed status	Yes
Alarm signal delivery time	0,15 s
Power supply	Battery: Two CR2 batteries Battery: Two CR123A batteries Power supply voltage: 3 V Battery life — up to 5 years
Jeweller radio technology	Communication range with central unit — up to 2,000 m in an open space Two-way communication between devices Operating frequencies — 868.0-868.6 MHz Self-adjusting RF output power — up to 20 mW Block encryption based on AES algorithm Device polling period — 12-300 s
Temperature sensor	Available
Operating temp range	From -10°C to +40°C
Permissible humidity	Up to 75%
Protection class of body	IP50
Anti-sabotage	Protection against fraud Jamming detection Tamper-resistant
Remote setting and testing	+
Dimensions	75x76x27mm
Weight	97 g
Certification	Grade 2, CE
Complete set	HomeSiren siren SmartBracket mounting panel Connector for LED indicator Two CR123A batteries (pre-installed) Installation set User's guide