

## Table of contents

|                                |       |
|--------------------------------|-------|
| User Manual .....              | 1 - 7 |
| 安裝指南 .....                     | 8-14  |
| Hướng dẫn sử dụng .....        | 15-21 |
| Buku Panduan .....             | 22-28 |
| Руководство пользователя ..... | 29-35 |
| دليل المستخدم .....            | 36-42 |
| Benutzerhandbuch .....         | 43-49 |
| Manuel d'utilisation .....     | 50-56 |
| Manual del usuario .....       | 57-63 |
| Kullanıcı El Kitabı .....      | 64-70 |

## Note

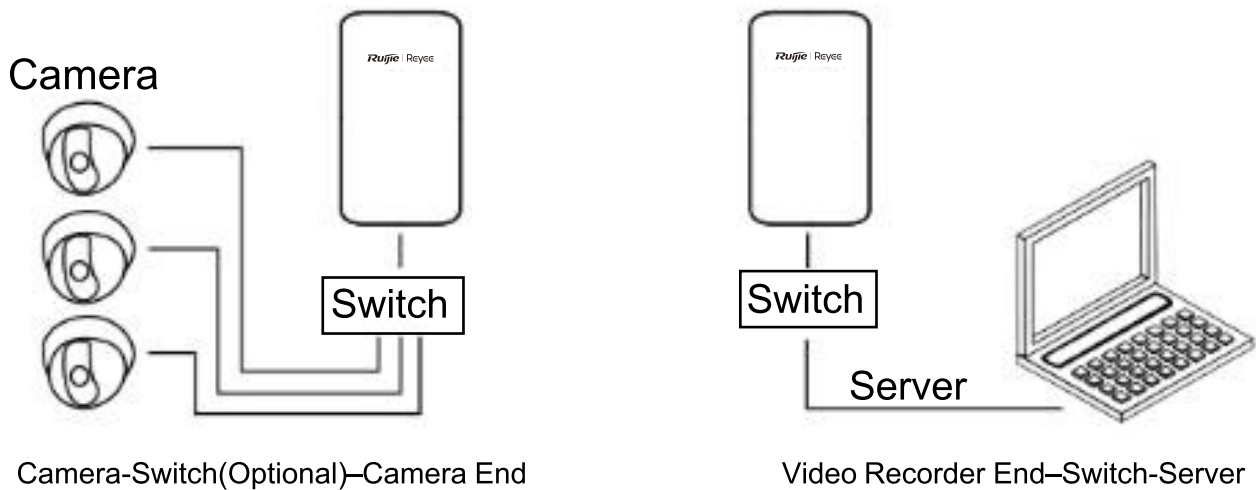
The device and software will be upgraded constantly. Please contact Ruijie technical support for details.

## Parts List

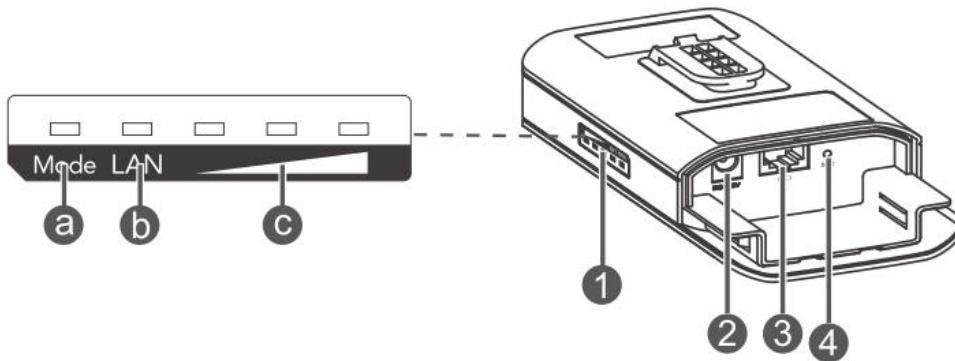
Management software WSP-EST310 V2 has been installed on the device.

| Part Description               | Qty |
|--------------------------------|-----|
| Camera End                     | 1   |
| Video Recorder End             | 1   |
| 24V/0.5A PoE Power Adapters    | 2   |
| Anchors                        | 4   |
| Mounting Brackets              | 2   |
| Self-Tapping Screws (ST4.2×19) | 4   |
| Pole Clamps                    | 4   |
| Warranty card                  | 1   |
| User Manual                    | 1   |
| Power Cable                    | 2   |

## Networking



## LED & Ports



### 1. LED Description

#### a. System LED

Blinking Green: The device is being booted.

Solid Green: The device is working properly.

#### b. LAN LED

Off: No cable is connected.

Blinking Green: Link is up. The port is sending or receiving data.

Solid Green: Link is up. The port is not sending or receiving data.

#### c. Signal LED

Off: No signal is detected.

Blinking: The signal is weak.

Solid: The stronger the signal gets, the more LEDs light up.

### 2. 12V DC Power Port

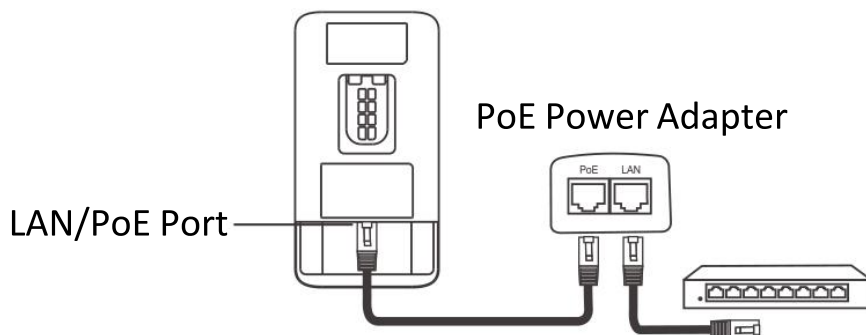
Inner Diameter: 2.1mm. Outer Diameter: 5.5mm.

### 3. LAN/PoE Port

### 4. Reset Button

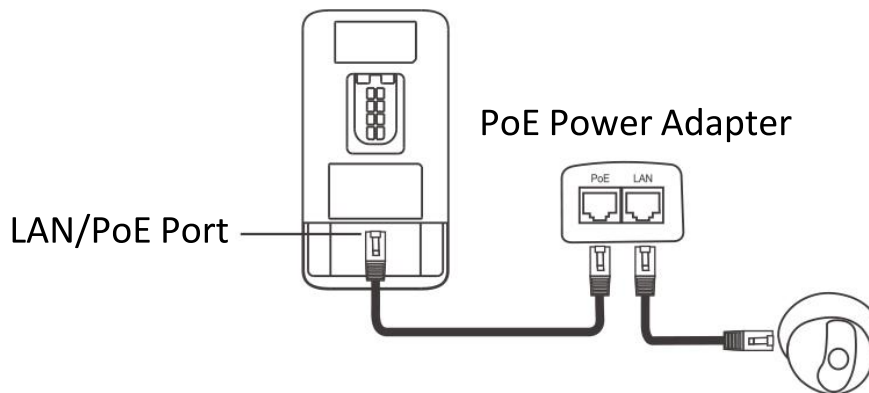
## Cable Connection

Video Recorder End



PoE Max Distance: 100m (CAT5/6/7 Cable)

Camera End



PoE Max Distance: 100m (CAT5/6/7 Cable)

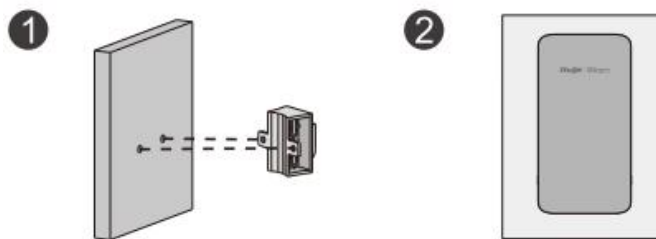
## Mounting the Device

### Pole Mounting



1. Secure the mounting bracket to the pole by threading two clamps through the mounting bracket.
2. Install the device to the mounting bracket.

### Wall Mounting



1. Secure the mounting bracket on the wall.
2. Install the device to the mounting bracket.

### Bridging Management

The wireless bridges are used in pairs without extra configuration. If you want to manage the bridge or view data, both App management and Web management are available.

#### App Management (Recommended)

1. Scan the QR code on the manual or device to download Ruijie Reyee App.

2. Sign up an account and log in with it.
3. Navigate to Project>+in the upper right corner > Wireless Bridge to manage the device.



## Web Management

### Wireless Login (Recommended)

1. Connect to the 5G SSID of the bridge (Default: @Ruijie-bxxxx. xxxx indicates the last four digits of the MAC address).
2. Open a browser window, enter http://192.168.120.1 into the address bar and press Enter.

### Wired Login

1. Set the IP address on your computer.

IP Address: 10.44.77.100

Subnet Mask: 255.255.255.0

Gateway: 10.44.77.254

Figure 1-1

 A screenshot of a network configuration dialog box titled "General". The dialog contains the following elements:
 

- A paragraph of text: "You can get IP settings assigned automatically if your network supports this capability. Otherwise, you need to ask your network administrator for the appropriate IP settings."
- Two radio button options:
  - Obtain an IP address automatically
  - Use the following IP address:
- Three input fields for manual IP configuration:
  - IP address: 10 . 44 . 77 . 100
  - Subnet mask: 255 . 255 . 255 . 0
  - Default gateway: 10 . 44 . 77 . 254
- Two more radio button options:
  - Obtain DNS server address automatically
  - Use the following DNS server addresses:
- Two input fields for manual DNS configuration:
  - Preferred DNS server: | . . .
  - Alternative DNS server: . . .
- A checkbox:  Validate settings upon exit
- An "Advanced..." button.
- At the bottom, "OK" and "Cancel" buttons.

2. Open a browser window, enter http:// 10.44.77.254 into the address bar and press **Enter**.

## One-to-Many Settings

### Select Master Bridge

Select any video recorder end as the master bridge and power on the device.

### Select Slave Bridge

Select any other device (either video recorder end or camera end) as the slave bridge and take the following steps to configure the slave bridge.

### Configure Slave Bridge

1. Log into the Web management page.
2. Select **Pair Again** in the upper right corner.



Figure 2-1

3. Click **Start**.

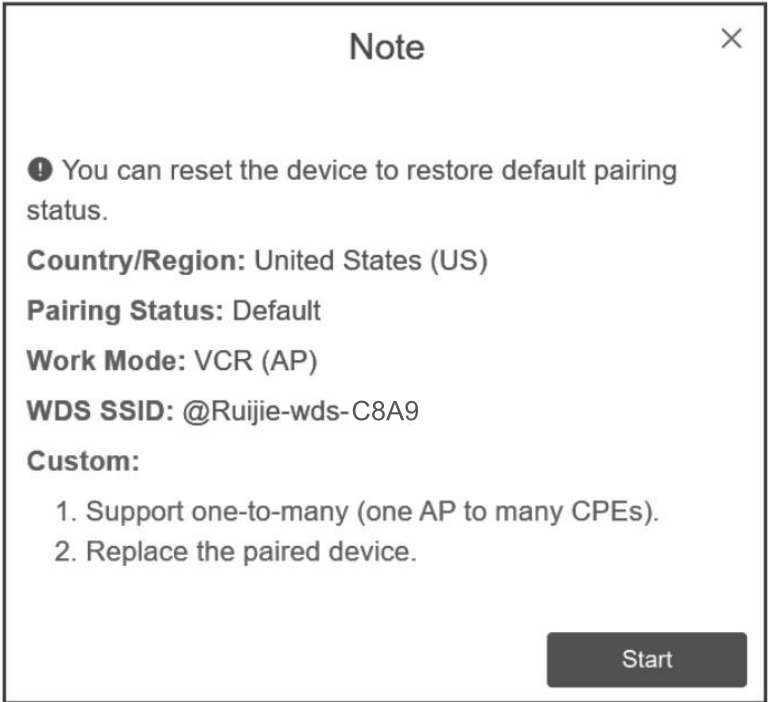
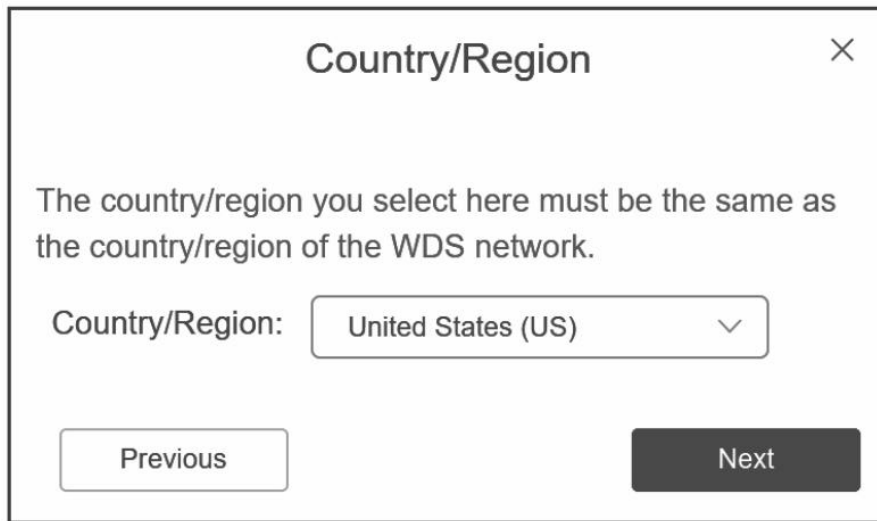


Figure 2-2

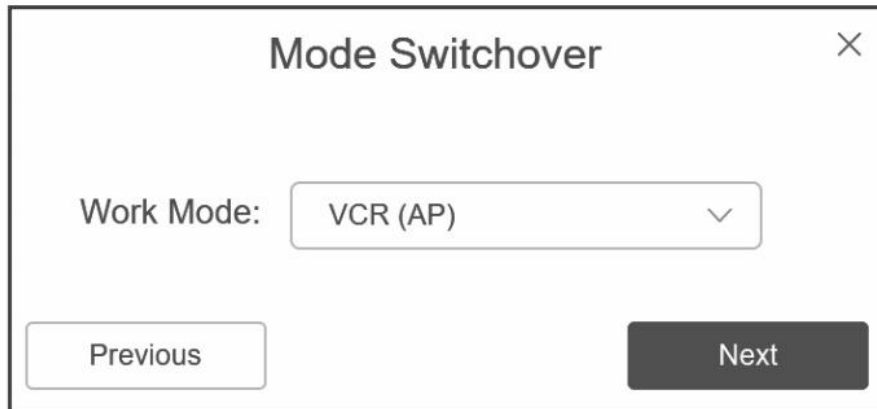
4. Select a country or region from the dropdown list and click **Next**.



A dialog box titled "Country/Region" with a close button (X) in the top right corner. The text inside reads: "The country/region you select here must be the same as the country/region of the WDS network." Below this text is a label "Country/Region:" followed by a dropdown menu showing "United States (US)" with a downward arrow. At the bottom, there are two buttons: "Previous" on the left and "Next" on the right.

Figure 2-3

5. Select **Camera (CPE)** and click Next.



A dialog box titled "Mode Switchover" with a close button (X) in the top right corner. The text inside reads: "Work Mode:" followed by a dropdown menu showing "VCR (AP)" with a downward arrow. At the bottom, there are two buttons: "Previous" on the left and "Next" on the right.

Figure 2-4

6. Click **Scan** and select an SSID from the dropdown list or enter an SSID (Example: @Ruijie-wds-xxxx. xxxx indicates the last four digits of the MAC address).



A dialog box titled "WDS SSID" with a close button (X) in the top right corner. The text inside reads: "Scan and select WDS SSID or enter WDS SSID." Below this text is a label "\* WDS SSID:" followed by a text input field containing "WDS SSID" and a "Scan" button. At the bottom, there are two buttons: "Previous" on the left and "Next" on the right.

Figure 2-5

7. Click **Submit**.



Figure 2-6

8. The **Mode** LED on the video recorder end is solid on and the **Mode** LED on the camera end blinks at 0.5 Hz.
9. If you want to add camera ends, please take the above steps again.

#### Notes

1. Please make sure that there are no obstacles between both ends.
2. If there are obstacles, please make sure that the devices are installed 3 to 5 meters higher than the obstacles.
3. If the obstacles cannot be avoided, it is recommended to adopt the repeater solution to implement Back-to-Back WDS.
4. For data transmission over a super-long distance, it is recommended to adopt the repeater solution to reduce distance between each pairing devices and improve stability.
5. If the monitoring devices and peer ends are concentrated at one location, it is recommended to select one-to-many solution to reduce cost and improve efficiency.
6. Please make sure that the distance between both ends are over 2 meters.
7. The **Mode** LED on the video recorder end is solid on and the **Mode** LED on the camera end blinks at 0.5 Hz.
8. The device may cause radio interference in living environment. Please take measures to reduce interference.

#### Note:

This equipment is restricted to indoor operation in 5.15-5.25GHz for Hong Kong.